



Agenda, Reports and Financial Statements 2024

For the Annual Meeting of Parishioners

and the

Annual Parochial Church Meeting

Sunday 16th March 2025

Rector:

The Reverend Rosemary Bunn
The Rectory , Beccles Road
Belton
Great Yarmouth NR31 9JQ

Curate/PTO Priest:

The Reverend Vivienne Ridpath
30 North Denes Road
Great Yarmouth

Independent Examiner:

Bank:

Royal Bank of Scotland
Great Yarmouth Branch
Great Yarmouth NR30 1HP

**Commissioning Prayer
of
PCC and Churchwardens**

**Lord, we thank you that you have called us to
follow you and brought us together in the
fellowship of your Church.**

**We gladly accept this leadership responsibility
which your people have given us for the next year.**

We commit ourselves unsparingly to your work.

**We resolve to exercise our leadership authority
in an effective and godly manner,
following the example of Jesus,
under the direction of your Holy Spirit,
for the advancement of your kingdom alone.**

Amen

A Prayer for Growth

**God of mission,
who alone brings growth to your Church,
send your Holy Spirit to give
vision to our planning,
wisdom to our actions,
joy to our worship,
and power to our witness.**

**Help our church to grow in numbers,
in spiritual commitment to you
and in service to our local community,
through Jesus Christ our Lord. Amen**

The Parish of All Saints Belton
Annual Parochial Church Meeting
Sunday 16th March 2025
during Sunday morning worship: 10.30 am
All Saints Church, Belton

Agendas

Opening Prayers

Apologies for Absence

Annual Meeting of the Parishioners
Chaired by the Rev. Rosie Bunn

1. Minutes of the 2024 Meeting (page 5)
2. Church Wardens' Report including Fabric Report (page 7-8)
3. Election of Church Wardens
Anneka Gearie (P-Adam Stone & S-Tim Bunn)
Adam Stone (P-Anneka Gearie & S-Tim Bunn)
Deputy Warden: Ben Bancroft (P-Anneka Gearie & S-Colin Chilvers)

Annual Parochial Church Meeting
Chaired by the Rev Rosie Bunn

1. Minutes of the 2024 meeting (page 5)
2. Matters arising from these minutes.
3. Parochial Church Council Secretary's Report 2024 including the Report on the Electoral Roll. (Pages 8-10)
4. Review of Safeguarding (Page 11)
5. Treasurer's Report and Accounts. (Pages 12-18)
6. Risk Management. (Pages 19-20)
7. Great Yarmouth Deanery Synod Report 2024 (Pages 20-21)

8. Church Organisations Reports (from page 23)

9. Appointment of the Welcome Team for Belton

10. Election of members of the P.C.C.

Members should be:

- proposed and seconded;
- on the Church Electoral Roll;
- willing to stand
- present at the meeting or apologies to the Secretary

11. Appointment of Officers:

- Election of Secretary (proposal:)
- Election of Treasurer (proposal:)
- Appointment of Vice Chairman (proposal: Adam Stone)
- Appointment of Electoral Roll Officer (proposal: Sue Angel)
- Appointment of Auditor (proposal:)

12. Any Other Business

(to be notified to the secretary before the meeting)

13. Date of the next A P C M *suggested*:

- Sunday 15th March 2026 or
- Sunday 23rd April 2026?



SITUATIONS VACANT

Might you be interested in serving tea/coffee? being on the welcome team? or the pastoral team? assisting with the PA or AV in church? or Rock Solid (Thursday pm)? or Sunday children? or setting up the Church for Young @ Heart or for Sunday Services? Your help would be much appreciated.

PLEASE SPEAK TO ANNEKA GEARIE OR ADAM STONE

At All Saints Belton there are opportunities to serve God in many different ways, using your gifts and skills, whatever your age or gender. All Saints is a church family where we are all learning to live our lives following the example of Jesus.

**All Saints Belton
Minutes of Annual Meeting of Parishioners
And
Annual Parochial Church Meeting
21st April 2024
Chaired by Rev Rosie Bunn**

Opening Prayers and Worship

Apologies for Absence: Liz and Adam Stone, Regi and Reena Alexander, Bill and Sue Richmond, Pete and Izzy Birchnall and Toni and Vas Symeou.

**Annual Meeting of the Parishioners
Chaired by Rev. Rosie Bunn**

- 1) **Minutes of 2023 Meeting** of the parishioners were agreed by all. Proposed by Anneka Gearie, seconded by Jim Channell
- 2) **Church Wardens Report** including the fabric report was accepted – proposed by: Sue Angell and seconded by: Sylvia Shaw. Unanimously accepted.
- 3) **Election of Church Warden 2024** – Anneka Gearie proposed by: Tim Bunn and seconded by: Janet Fuller. Unanimously agreed by all. Thank you to Ady, and also to Anneka who has carried out most of the church warden responsibilities this past year. Prayers said to bless Anneka as she continues in her role.

**Annual Parochial Church Meeting
Chaired by Rev. Rosie Bunn**

- 1) **Minutes of the 2023** Annual Parochial Church Meeting were adopted – proposed by: Janet Fuller and seconded by: Shirley Gracie unanimously agreed by all
- 2) **Matters arising** from these minutes: None
- 3) **Parochial Church Council Secretary Report** (2023) including the report on the electoral roll was accepted – proposed by: Anneka Gearie seconded by: Sue Angell. Unanimously agreed.
- 4) **Safeguarding Annual Review:** Michelle Horgan was confirmed as our Parish Safeguarding Officer. Proposed by: Rosie Bunn seconded by: Anneka Gearie Unanimously accepted. Michelle was thanked for her hard work over the past year.

- 5) **Treasurers Report 2023** – Accounts for 2023 checked and verified by Independent Examiner, Brenda Hoskins.
Report Accepted – proposed by: Rosie Bunn seconded by: Jim Channell
Question regarding gift aid forms – people encouraged to complete if appropriate
- 6) **Risk Management:** Report reviewed and accepted by all
- 7) **Deanery Synod Report 2023:** received and proposed by: Rosie Bunn and seconded by: Viv Redpath. An Howell continues as Deanery Synod representative
- 8) **Church Organisations:** reports received and reviewed, all accepted. Colin thanked in particular for his hard work supporting rock solid for over 25 years, we wished him all the best in his retirement.
- 9) **Election of the Welcome Team for Belton:** People were invited to approach if this is of particular interest
- 9) **Election of PCC:**
It was proposed by Rev Rosie Bunn and seconded by Jim Channell that all named persons who had been put forward for PCC who were on the electoral roll, willing and able to stand and present at the meeting (or with apologies sent) be elected.
Elected Members: Sue Angell, Kelly Bancroft, Colin Chilvers, Michelle Horgan, Derek Mill, Janet Fuller, Shirley Gracey, Elizabeth Stone, Bob Hudson
- 10) **Appointment of Officers**
Secretary – Kelly Bancroft
proposed by Sue Angell, seconded by An Howell – unanimous.
Treasurer – Anneka Gearie
proposed by Viv Redpath, seconded by Jim Channel - unanimous
Vice Chair – Anneka Gearie
proposed by Derek Mill, seconded by Sue Angell - unanimous
Electoral Roll Officer – Sue Angell
proposed by Rosie Bunn seconded by: Anneka Gearie - unanimous
Independent examiner: Brenda Hoskins was proposed by: Anneka Gearie and seconded by: Michelle Horgan agreed unanimously
- 11) Any Other Business – None
- 12) Date of next Annual Parochial Church Meeting: Sunday 23rd March 2025

Church Wardens Report 2024 including Fabric Report

As we gather for our Annual Parochial Church Meeting, it is with pleasure that I present this report. This past year has been marked by both challenges and opportunities, and I am grateful for the chance to reflect on our achievements and anticipate the year ahead. There has been a heavy focus this year on ensuring all our policies and risk assessments etc, are completed and up to date. Despite external challenges, our commitment to providing spiritual guidance, fostering fellowship, and engaging with our community has remained unwavering.

Worship and Spiritual Life: Our worship services have continued to serve as the foundation of our community life, offering moments of reflection, inspiration, and connection. We continue to embrace new worship aids through technology, to ensure accessibility for all members of our congregation. Additionally, we have provided opportunities for spiritual growth and formation through study groups, prayer meetings, and other initiatives.

Pastoral Care: In the face of uncertainty and hardship, pastoral care continues to be a priority for our church community. Our clergy, staff, and volunteers have tirelessly offered support, comfort, and encouragement to those in need. Whether through pastoral visits, phone calls, or practical assistance, we have endeavoured to embody Christ's love and compassion in all our interactions.

Maintenance and Building Care: As Churchwarden, I am entrusted with the responsibility of maintaining our Grade II listed building. I extend my heartfelt gratitude to all who have contributed to this effort, from churchyard clean-ups to maintenance tasks. Special thanks to the unseen volunteers who diligently prepare the church building for various events each week.

I also appreciate the assistance of MJ Bunting cleaners in keeping our beautiful building clean. However, as a church community we acknowledge the need for personal responsibility in maintaining tidiness to maximize the effectiveness of their services.

Due to a successful grant application to the National Lottery Community Fund, we were able to have the window in the tower repaired as well as glass and lead replacements to the small areas of the Vestry windows that needed replacements. As part of the grant we also upgraded the projector screens to TV's, and upgraded the audio equipment used within the church.

The **Quinquennial survey** identified necessary repairs and maintenance, some of which we had planned to complete this year. These efforts were hindered due to the weather and volunteer sickness, so many of these jobs are now marked as urgent for the upcoming year.

Ornaments and Chattels: We have updated our inventory records and continue to ensure the proper care of church ornaments and chattels. Despite the many challenges this year, progress is being made to ensure everything is accounted for and properly maintained.

Conclusion: As we reflect on the past year, we are encouraged by God's presence amidst the challenges, complexities, and blessings we have faced. I extend my gratitude to the congregation for their support, friendship, and encouragement. It has been a privilege to serve alongside such dedicated individuals and volunteers, to share worship and fellowship, and to deepen our journey with God together.

As we look to the future, let us embrace the opportunities and challenges ahead with faith, hope, and courage. Together, as a community of faith, we can continue to make a meaningful difference in the lives of those around us and further God's kingdom on earth.

Blessings.

Anneka Gearie

Parochial Church Council Secretary's Report including the Report on the Electoral Roll – 2024

Incumbent:	The Rev. Rosie Bunn		
Curate/PTO Priest:	The Rev. Vivienne Ridpath		
Church Warden:	Anneka Gearie		
Secretary:	Kelly Bancroft		
Treasurer:	Anneka Gearie		
Elected Members:	Derek Mill	Colin Chilvers	Janet Fuller
	Shirley Gracey	Michelle Horgan	Sue Angell
	Bob Hudson	Liz Stone	
Ex Officio:	GY Deanery Synod: An Howell		
	GY Deanery Synod: Mary Ives		
Co-opted:	Adam Stone		

There have been 9 PCC Meetings held throughout the year. The meetings regularly discuss Finance, Safeguarding, Prayer, the Church Building and Churchyard, Deanery Synod, Young at Heart, the church's digital presence, Children and Youth, Moorlands and The Pantry Foodbank, with reports being provided by the leaders at most meetings. All groups and events that happen within the church body meet with the backing of the PCC. Thank you to all who

attended the PCC meetings, both online and in person, and offered valuable guidance, comment and support, as without the responsibilities taken on and the work done by members of the PCC the church could not function.

Finance is always a major source of discussion, and we have worked hard to raise the Parish Share, but failed in our endeavours. This continues to be a real concern as we do not really pay our way (the full cost for our Benefice with one Vicar was £70,420 in 2024, yet we were only asked to pay £35,379 of the £44,777 Benefice share) and we have not been able to reach the significantly reduced rate expected of us. We paid £20,000 which is 56.53% of what we were asked for.

Please keep in mind that the church relies totally on the financial giving by church members to operate. The costs for 2025 are:

Cost for Diocese of clergy (one Vicar) £88,804

Benefice request: £46,199

Belton share: £36,503.

Please reflect on your regular giving to the church and be as generous as you are able - experience has shown that we can never out-give the Lord.

Duties and functions of the PCC includes co-operation with the Incumbent in promoting in the parish the whole mission of the Church, pastoral, evangelistic, social and ecumenical, as well as the consideration and discussion of matters concerning the Church of England and matters of religious and public interest.

Belton Parochial Church Council has responsibility for no properties other than the actual church building.

Church Electoral Roll currently has 46 members – of whom 35 are resident and 11 of whom are non-resident in the parish.

PCC Agenda items have included; safeguarding, prayer, reflection on church identity – on being a loving church – of generosity & service – worship & prayer, the Quinquennial report on the church building – and maintenance & repair work needing to be done, The Pantry foodbank, church fees, the Diocesan Vision: Transformed by Christ, Prayerful, Pastoral, Prophetic, and the interregnum after Easter 25.

Events that have been held this year include, Men's Walks, participation in the Village Voice Community Fete, Service of Remembrance and Thanksgiving (in Burgh Castle Church), Harvest Festival and Harvest lunch, Christmas Fair in the Church Building and Carols at the Queens Head in Burgh Castle.

Vocations: We have also been pleased to put forward Jim Channell for training as a Licensed Lay Minister (LLM) and Liz Stone as a potential ordinand. We have

welcomed Mary & Robin Ives back to our benefice, Mary transferring her LLM licence to Belton & Burgh Castle. We marked this with a combined service & lunch which Burgh Castle were pleased to join in.

Prayer and Study Groups are still proving to be a great strength to their members. The groups include; Men’s Prayer Breakfast, Paddock Close Life Group, Woodlands Life Group, The Rectory Life Group, Recharge and Ladies Bible Chat.

Worship at All Saints Belton usually comes in a variety of styles including morning and evening celebrations, Café Church, Messy/Muddy Church (which takes place in The Rectory garden), and Holy Communion. Services were live-streamed from the Church Building to Facebook until the latter part of 2024; due to issues with *Facebook*, the PCC decided to record the service and upload it to *YouTube* to allow as many people as possible to access services, if they are unable to get to the building. The worship team is currently smaller than it has been, and sometimes it can be down to two members to lead worship.

The first Tuesday in the month is usually when there is a traditional service of Holy Communion in church, coinciding with the *Young at Heart* group meeting. Children’s church has continued its varied programme outside of the church service on a Sunday morning.

	(Average)	
	Children	Adults
Morning Celebrations:	5	24
Café Church:	7	26
Holy Communion:	8	30
Tuesday Holy Communion:	0	12
Evening Celebrations:	-	12
Special Services:		
Easter Sunday HC	13	39
Remembrance	17	39
Christmas Carols	9	53
Crib Service	21	34

During 2024 there have been:

2 Baptisms	1 Funerals	0 Wedding
1 Confirmation	2 Cremation services	1 Wedding Blessing
	6 Interment of Ashes	

Information: Details concerning church services and special events are on display on the notice boards in the churchyard. Child protection and vulnerable adult policies, Diocesan Churchyard regulations and the Table of Statutory Fees are displayed in the porch together with the insurance policy and CCLI Licences.

Safeguarding

When we think of Safeguarding it may conjure thoughts of harm and wrongdoing, though within All Saints, Belton we've been working towards considering it to be something that is central to all we do, as an act of love and a demonstration of the care of people within the church and others we meet. By having safeguarding measures in place we are doing all we can to make sure we have safe environment in which to delivery ministry

Micah 6:8 (MSG)

But he's already made it plain how to live, what to do,
what God is looking for in men and women.

It's quite simple: Do what is fair and just for your neighbour,
be compassionate and loyal in your love,
And don't take yourself too seriously -
take God seriously

What this looks like in practice is:

- At every PCC meeting safeguarding is on the agenda, giving the topic space for discussion, valuing its importance.
- Holding Safeguarding Sunday on 24th November, where this was the focus of the sermon and gave an opportunity to explore it further
- Those directly involved in PCC and working with people who may be considered vulnerable have training and DBS checks
- Risk assessments to cover all activities involving people who may be considered vulnerable, considering emotional as well as physical safety
- Updating the Parish Safeguarding Dashboard to ensure we are in line with Diocesan requirements

It has been a challenging time for the wider church regarding concerns over how historical safeguarding concerns have been managed, which may feel unsettling. As a PCC we have continued to develop our practices, encouraging healthy conversation within appropriate boundaries to make it feel safe to have conversations around any concerns to be able to help everyone feel safe in continue to do the work we feel called to within the church.

Michelle Horgan
Parish Safeguarding Officer

Treasurer's Report and Accounts - 2024

I am honoured to present this financial report, demonstrating our commitment transparency and stewardship in managing the resources entrusted to us by the congregation.

Income:

Our total income for the year amounted to £58,571.75, sourced from various sources including:

- Regular giving and donations
- Income from fundraising events
- Gift Aid recovery
- Grants and other contributions

We are deeply grateful for the generosity of our parishioners and supporters, whose continued financial support enables us to fulfil our mission and sustain our ministries.

Expenses:

Total expenses for the year amounted to £54,027.39, covering various operational and ministry-related costs, including:

- Parish Share
- Utility bills and maintenance expenses
- Mission giving and donations
- Administrative expenses
- Property maintenance and repairs

Despite the challenges posed by rising costs, we have endeavoured to manage expenses prudently while ensuring the continued vitality of our church community.

Budget Highlights:

Highlights from this year's budget include:

- Inability to meet our Parish Share contributions
- Continued support for outreach and community engagement programs
- Grant support for children and youth work as well as foodbank provisions

Gratitude:

I extend my heartfelt gratitude to the PCC members and volunteers who have generously contributed their time, expertise, and financial resources to support our church's mission. Your dedication and commitment are integral to our continued success.

Gift Aid:

Gift Aid plays a crucial role in meeting ministry costs and church maintenance. I urge every member of our church family who can complete and sign an annual Gift Aid declaration. For those unable to Gift Aid donations, cash or contactless

methods are preferred, as standing orders cannot be included in small donation claims.

Conclusion: In conclusion, it has been another challenging financial year, and we have not been able to achieve all our objectives. However, our church remains reliant on God's provision to meet the challenges and opportunities ahead. With continued support from our parishioners and divine guidance, we will remain faithful stewards of the resources entrusted to us, ensuring our church communities' ongoing vitality and impact.

**Anneka Gearie
Treasurer**

Financial Statement for the Year Ended 31 Dec 2024

	Unrestricted Fund	Designated Fund	Restricted Fund	Endowment Fund	Total 2024
	£	£	£	£	£
Receipts					
Voluntary receipts:					
Collections at Services	2,860.75	-	-	-	2,860.75
Planned giving	20,390.00	-	-	-	20,390.00
All other giving/voluntary receipts	3,118.12	2,145.00	-	-	5,263.12
Grant Income	-	400.00	15,930.00	-	16,330.00
Legacies Received (Capital Value)	-	-	-	-	-
Gift Aid recovered	6,176.42	-	-	-	6,176.42
	32,545.29	2,545.00	15,930.00	-	51,020.29
Activities for generating funds					
Investment income	2,467.16	-	-	-	2,467.16
Church activities	5,084.30	-	-	-	5,084.30
Other income	-	-	-	-	-
Total receipts	40,096.75	2,545.00	15,930.00	-	58,571.75
Payments					
Church activities:					
Parish share	20,000.00	-	-	-	20,000.00
Clergy and Staffing costs	705.25	-	-	-	705.25
Church running expenses	7,041.41	400.00	15,522.73	-	22,964.14
Mission giving and donations	681.00	-	-	-	681.00
Building work and repairs	5,569.26	-	-	-	5,569.26
Administration Costs	64.89	-	-	-	64.89
Other expenditure	4,042.85	-	-	-	4,042.85
	38,104.66	400.00	15,522.73	-	54,027.39
Costs of generating funds		-	-	-	-
Total Payments	38,104.66	400.00	15,522.73	-	54,027.39
Excess of receipts over payments	1,992.09	2,145.00	407.27	-	4,544.36
Cash at bank and in hand at 1 Jan	14,587.92	-	-	-	14,587.92
Cash at bank and in hand at 31 Dec	7,804.99	2,145.00	407.27	-	10,357.26

Statement of Assets and Liabilities

	Unrestricted Fund	Designated Fund	Restricted Fund	Endowment Fund	Total 2024
	£	£	£	£	£
Cash Funds					
Bank Current Account	4,035.87	2,145.00	-	-	6,180.87
Bank Savings Account	3,769.12	-	407.27	-	4,176.39
Deposit Account	5,238.56	-	-	-	5,238.56
	13,043.55	2,145.00	407.27	-	15,595.82

	Unrestricted Fund	Designated Fund	Restricted Fund	Endowment Fund	Total 2024
	£	£	£	£	£
Assets retained for Church Use					
Building Fund	-	2,342.38	-	-	2,342.38
Rebuild Fund	-	3,481.29	-	-	3,481.29
Pantry	-	1,495.52	-	-	1,495.52
Warm Space	-	-	-	-	-
Reserved Funds	-	4,765.38	407.27	-	5,172.65
Total Assets	-	9,742.19	407.27	-	10,149.46

	Unrestricted Fund	Designated Fund	Restricted Fund	Endowment Fund	Total 2024
	£	£	£	£	£
Collections at Services					
Sunday Collections	2,833.25	-	-	-	2,833.25
Wedding and Funeral Collections	27.50	-	-	-	27.50
	2,860.75	-	-	-	2,860.75

	Unrestricted Fund	Designated Fund	Restricted Fund	Endowment Fund	Total 2024
	£	£	£	£	£
Planned Giving					
Standing Order	20,390.00	-	-	-	20,390.00
	20,390.00	-	-	-	20,390.00

	Unrestricted Fund	Designated Fund	Restricted Fund	Endowment Fund	Total 2024
	£	£	£	£	£
Gift Aid Recovered					
Gift Aid Reclaim	6,176.42	-	-	-	6,176.42
	6,176.42	-	-	-	6,176.42

	Unrestricted Fund	Designated Fund	Restricted Fund	Endowment Fund	Total 2024
All Other Giving/Voluntary Receipts	£	£	£	£	£
Appeals	-	-	-	-	-
Donations	2,540.12	2,723.00	-	-	5,263.12
	2,540.12	2,723.00	-	-	5,263.12
	Unrestricted Fund	Designated Fund	Restricted Fund	Endowment Fund	Total 2024
Activities for Generating Funds	£	£	£	£	£
Fete	1,090.58	-	-	-	1,090.58
Other Fundraising	594.72	-	-	-	594.72
	1,685.30	-	-	-	1,685.30
	Unrestricted Fund	Designated Fund	Restricted Fund	Endowment Fund	Total 2024
Church Activities	£	£	£	£	£
Fees- Statutory	3,399.00	-	-	-	3,399.00
	3,399.00	-	-	-	3,399.00
	Unrestricted Fund	Designated Fund	Restricted Fund	Endowment Fund	Total 2024
Investment Income	£	£	£	£	£
Dividends and Interest	2,467.16	-	-	-	2,467.16
	2,467.16	-	-	-	2,467.16
	Unrestricted Fund	Designated Fund	Restricted Fund	Endowment Fund	Total 2024
Grant Income	£	£	£	£	£
Non-Recurring Grants	16,330.00	-	-	-	16,330.00
	16,330.00	-	-	-	16,330.00
	Unrestricted Fund	Designated Fund	Restricted Fund	Endowment Fund	Total 2024
Clergy and Staffing Costs	£	£	£	£	£
Clergy Expenses	705.25	-	-	-	705.25
	705.25	-	-	-	705.25

	Unrestricted Fund	Designated Fund	Restricted Fund	Endowment Fund	Total 2024
Church Running Expenses	£	£	£	£	£
Cleaning	1,173.68	-	-	-	1,173.68
Gas and Electric Bill	6,084.60	-	-	-	6,084.60
Insurance	2,384.03	-	-	-	2,384.03
Service Costs	1,093.86	-	-	-	1,093.86
Maintenance	9,727.98	-	-	-	9,727.98
Water Bill	133.78	-	-	-	133.78
Volunteer Expenses	980.26	-	-	-	980.26
Legal Expenses	1,385.95	-	-	-	1,385.95
	22,964.14	-	-	-	22,964.14

	Unrestricted Fund	Designated Fund	Restricted Fund	Endowment Fund	Total 2024
Mission Giving and Donations	£	£	£	£	£
Charities - Home	636.00	-	-	-	636.00
Charities - Overseas	45.00				
Charities - Secular	-				
	681.00	-	-	-	636.00

	Unrestricted Fund	Designated Fund	Restricted Fund	Endowment Fund	Total 2024
Cost of Generating Funds	£	£	£	£	£
Fund Raising	-	-	-	-	-

	Unrestricted Fund	Designated Fund	Restricted Fund	Endowment Fund	Total 2024
Administration Costs	£	£	£	£	£
Computer	-	-	-	-	-
Bank Charges	64.89				64.89
	64.89	-	-	-	64.89

	Unrestricted Fund	Designated Fund	Restricted Fund	Endowment Fund	Total 2024
Other Expenditure	£	£	£	£	£
Mission and Evangelism Costs	4,029.85	-	-	-	4,029.85
Churchyard Expenses	13.00	-	-	-	13.00
	4,042.85	-	-	-	4,029.85

Independent Examiners Certificate

Report to the trustees/ members of: ALL SAINTS RECTON PCC
 On accounts for the year ended: 2024
 Charity no (if any): —

I report to the trustees on my examination of the accounts of the above charity ("the Trust") for the year ended 31/12/24.

Responsibilities and basis of report

As the charity's trustees, you are responsible for the preparation of the accounts in accordance with the requirements of the Charities Act 2011 ("the Act").

I report in respect of my examination of the Trust's accounts carried out under section 145 of the 2011 Act and in carrying out my examination, I have followed all the applicable Directions given by the Charity Commission under section 145(5)(b) of the Act.

Independent examiner's statement

[The charity's gross income exceeded £250,000 and I am qualified to undertake the examination by being a qualified member of []: *Delete if not applicable.*

I have completed my examination. I confirm that no material matters have come to my attention in connection with the examination (other than that disclosed below *) which gives me cause to believe that in, any material respect:

- the accounting records were not kept in accordance with section 130 of the Charities Act; or
- the accounts did not accord with the accounting records; or
- the accounts did not comply with the applicable requirements concerning the form and content of accounts set out in the Charities (Accounts and Reports) Regulations 2008 other than any requirement that the accounts give a "true and fair" view which is not a matter considered as part of an independent examination.

I have no concerns and have come across no other matters in connection with the examination to which attention should be drawn in this report in order to enable a proper understanding of the accounts to be reached.

* Please delete the words in the brackets if they do not apply.

Signed: [Signature] Date: 19/02/2025

Name: PIERS HAN

Relevant professional qualification(s) or body (if any)

N/A

Address:

7 LEYS CLOSE
GREAT YARMOUTH
NR31 0HE

Section B

Disclosure

Only complete if the examiner needs to highlight material matters of concern (see CC32, Independent examination of charity accounts: directions and guidance for examiners).

Give here brief details of any items that the examiner wishes to disclose

[Empty box for disclosure]

Risk Management

Financial Risks

In 2024, All Saints, Belton again did not manage to pay what was required by the Diocese for our Parish Share contribution. Neither has the church paid a regular amount to chosen charities, as has been the wish of PCC for a number of years, but small charitable donations were made to those chosen charities after specific services focused on their work.

The church survives month to month and greatly appreciate the giving of everyone including the giving of skills and time. During 2024 the church was well used: we were able to offer a warm space two days per week at the beginning of the year, in addition to Tuesday morning Young at Heart, thanks to a successful grant application in 2023 from Norfolk Community Fund and a Diocesan grant towards the cost of the heating and lighting. However, with the increases in fuel costs, our heating/lighting costs still need to be carefully monitored.

Giving through the offering basket has decreased slightly, but because much of the giving at All Saints is through standing orders and direct debit, money continues to come in to enable bills to be settled. The full cost to the Benefice of having one full-time clergy post, before the reductions given, was £70,420 for 2024 and is £72,594 for 2025. In 2023 we were given a reduced rate for 2024 of £44,777 (£35,379 Belton share) and for 2025, £46,199 (£36,503 Belton share) with the expectation that this would be paid in full. We have been unable to meet the reduced requests for the past two years; it could have consequences in the appointment of a new Rector. Going forward money will continue to get tighter as the church seeks to meet the required payment.

As the church we continues to reach out to a world in need, the PCC does find the monthly ritual of wondering whether we have managed to “get by” again, time consuming and draining of our energy. Please pray that as a church we will respond to God’s generosity to us and find ways to provide enough income for the church to

- pay our Parish Share
- donate generously to the chosen charities
- fund the work we do in all areas including Refill, Rock Solid, Moorlands Academy, Youth and pastoral care
- continue to contribute to the running of The Pantry Foodbank scheme*

* Funding for The Pantry comes significantly from contributions made by a few church members & Burgh Castle church, village groups & Moorlands Academy.

Statutory and Legal Requirements

The DBS checks and safeguarding training are updated regularly on the Parish Dashboard; Church Wardens, clergy, lay ministers and youth & children’s workers are all required to have enhanced DBS checks. Everyone who works

with young people or vulnerable adults must have a DBS check and have completed C0 and C1 of the National Safeguarding course.

Our Parish Safeguarding Officer and those in licensed leadership (clergy & LLMs) must have completed the C2 Leadership level. This applies particularly in regard to our work with Young at Heart and all the children's work. Regular training needs to be undertaken. Safeguarding training is an essential requirement for all PCC members, who are required to reach level C1 and the Domestic Abuse training. There is also the need to keep up-to-date with both the Safeguarding training and our DBS checks.

The Health and Safety Policy and our two Protection Policies need to be kept up to date. Data Protection and GDPR regulations are adhered to.

Operational Risks

There is an expectation that we regularly check the building; and all maintenance and repair work carried out is logged in the book kept in the vestry.

A new carpet for the chancel still awaiting completion. Further funds have been raised for this and a faculty application has to be made. The TV screens and upgrades to the audio and visual software has been completed. New operators are being trained to enhance the AV/PA team; please encourage them and be graceful.

Whilst in interregnum, the church will be dependent upon local clergy willing to come and lead the services of Holy Communion, and the availability of volunteers leading the other services. The Rural Dean, Revd David Wells and the Archdeacon, the Venerable Steven Betts will support the Churchwardens and our licensed LLM, Mary Ives, in this.

If the church is to continue its work during the interregnum, new volunteers will be needed to help share out the load, to allow the Churchwardens to fulfil their responsibilities as Bishop's Officers in keeping the church operational.

If you feel you have something to offer, or feel your skills are being under-used, please speak to one of the Churchwardens. Help is always needed and appreciated at the "clean up" days spread throughout the year; watch for these on the church notice sheet.

The Pantry Foodbank continues to be called upon, and the team meets that workload between them. Overarching care needs to be given to those who care for those in need; this will be provided by Mary Ives and the PCC.

We all have a duty to look after each other, from those who lead to those who have just found faith; Therefore, as we have opportunity, let us do good to all people, especially to those who belong to the family of believers. Galatians 6:10

Rev Rosie Bunn – Rector
Anneka Gearie – Churchwarden & Adam Stone – Deputy Churchwarden

GT.YARMOUTH DEANERY SYNOD REPORT FOR 2024

Lay Representatives for All Saints Belton: An Howell & Mary Ives
Clergy Representatives: Rev Rosie Bunn, Rev Viv Ridpath (until June 24)

Synod held on 5th March at All Saints Church, Belton – 34 attended with 9 apologies received. Minutes were read and accepted. Matters arising – Deanery Share Ambassador – no further action at present. Rev Shaula Reilly welcomed as vicar at St Andrews and Maggie Beardsmore new churchwarden and Synod rep for St Mary the Virgin Martham. Derek McClean of Cliff Park Community Church presented an interesting Parish Spot Light. Treasurer's report showed £717.38 in bank. Phillip Laker-Jones was elected as Diocesan Synod Lay member.

Pam Spychal and Matthew Price presented 2 sides of Living in Love and Faith. Sue Hemsley-Halls talks about the difference between AWA's, APA's and LLM. Revd Albert Cadmore had received the BEM for services to the RNLI. Revd Ashley Hines to leave Great Yarmouth and Revd Deborah Walton has joined Flegg Churches as Team Vicar.

Synod held on 19th June at St Andrews Church, Gorleston – 38 attended with 6 apologies received. Matters arising - David Yaxley asked for Living in Love and Faith to be added to agenda for next meeting – David Wells agreed to discuss at next standing committee.

Tim Sweeting – CEO of Diocese (Diocesan Secretary) - Gave an insight into his role - this is to work with Parish Support Team to help all churches. Parish giving scheme. Treasurer's report showed £937.38 in bank. Suggestion on how money to be spent – Deanery contactless machine to be lent out – cost £350 – 3 month try before you buy.

David Wells was licensed as the new Rural Dean of Great Yarmouth Deanery. The Revd Canon Simon Ward was thanked for all he has done as Rural Dean. Generous giving on Agenda for next Synod. Revd Debs Walton welcomes as new vicar designate for Flegg North Churches.

Synod held on 17th October at St Georges Church, Rollesby – 35 attended with 2 apologies received.

Robert Culyer and Colin Tomlin gave a Generous Giving presentation. Many ways to equip parish churches to create the best environment for encouraging giving and generosity. It is becoming more important to have a digital way of donating – average cash donation = £2; average contactless donation = £6.

As a consequence of this presentation, and the report back to PCC, an invitation was sent for the Generous Giving Team to present material at a PCC Meeting – in January 2025.

Matters arising – David Wells – we were asked to debate Living in Love and Faith – not going ahead and foster unity – we are not allowed to take a stand. Treasurer's report showed £962.88 in bank.

Parish Spotlight was presented by Revd Jo Wood on 17 Churches in the Flegg Churches team.

Revd Richard Washington is joining Great Yarmouth Team.

Revd Steve Andrews is retiring. Revd Jim Hastwell has died.

Deanery Synod Secretary

Church Group Reports



Church Organisations Reports

Worship Team Plus

There have been at least three players most weeks this last year employing guitar, keyboard, bass, mandolin and drums. Tracey has returned from Portsmouth occasionally to lead at times throughout the year. We are still in the fortunate position of being blessed with four worship leaders, Derek, Jim & Barbie, Liz and Mary.

We have introduced new songs occasionally often using the CCLI website as an aid, as well as reintroducing older songs that have not been used for a while. Children's songs have also been included each week and there have been new ones introduced during the year too.

Jim and Derek have brought new songs that they have each composed

Thank you to all who contribute to the worship band and to those involved in the PA and audio.

Derek Mill

Digital Ministry

Social Media:

Although our social media presence has diminished, we've observed that the small number of people we do reach are more engaged with our content this year than in previous years.

Here are some key highlights:

- **Live Streaming:**

Initially launched in response to the pandemic, live streaming of our services continues to be a staple, offering continuity in worship and fellowship activities for those unable to attend in person. At the beginning of 2025 we have however switched to recording the service to upload to youtube in response to continuing problems with the facebook systems.

- **Interaction and Feedback:**

Our social media platforms serve as interactive spaces for members to connect, share their thoughts, and provide feedback. We've encouraged dialogue and promptly addressed inquiries and concerns, fostering community and openness to those not currently members of our church.

Website Management:

Our church website remains a central hub for information, resources, and engagement opportunities.

Key highlights include:

- **User-Friendly Design:** Efforts continue to ensure all content is user-friendly and accessible, facilitating easy navigation and engagement with our church's offerings.
- **Up-to-date Information:** Although the majority of content is evergreen, there's room for improvement in maintaining current and relevant information to keep visitors informed about our church's activities.
- **Multimedia Content:** Plans continue to enhance multimedia content on the website include adding music playlists and video testimonials, providing additional avenues for spiritual nourishment and engagement.
- **Online Giving:** While online giving functionality hasn't been fully promoted through the website, we did accept payments for the Light Party Tickets again this year, aiding in event planning.

Conclusion; In conclusion, while our digital ministry efforts have laid the groundwork to extend the reach and impact of our church's mission, there's much more work to be done. We remain committed to leveraging digital tools and platforms to enhance our ministry outreach and engagement. However, we recognize the need for creative, dedicated, and collaborative volunteers to help us adapt and innovate in the digital landscape.

To all who have contributed to our digital ministry endeavours—whether through content creation, technical support, or active participation—your contributions are deeply appreciated and vital to the ongoing success of our digital outreach efforts.

Anneka Gearie

Pastoral Care Report

A service of Thanksgiving and Remembrance for those we have loved and lost was held for the second time, on 20th June 2024, this time at Burgh Castle church. Invitations were sent to the next of kin, or those who had been involved in arranging funerals for their loved ones in the past 5 years, and were well received, as was the service by all those who attended.

I have continued to go into Burgh House each month, usually twice in the month at Easter and Christmas. I provide special services for Harvest, and Remembrance, and at least one songs of praise during the year; on the Saturday before Christmas we have Carols and Communion in the main sitting room, followed by mince pies and sherry or Baileys. Some of the residents have been and are members of the church or lived in Belton. Mary Ives has begun to visit the residential care home with me, with a view to continuing this work when I leave.

Pastoral care happens naturally between church members who belong to a life group; catching up with people on a Sunday (or if they are not in church) enables visits to be made, when needed.

Alongside pastoral visits from clergy, there is friendly 'checking in' on people, befriending and supporting in practical ways. Holy Communion can be and is taken to people in their own home when they are no longer able to come to church.

Pastoral care has been rather informal and *ad hoc*, but following discussions at PCC clearer planning, training and support, is being developed. It is important that members of the church who undertake pastoral visiting are properly checked and offered training, especially in safeguarding.

Young at Heart provides wonderful pastoral care in their gathered community; often the members are supporting and encouraging one another, and it is lovely to see. If someone hasn't been to the group for a little while, their absence is noticed. Keep up the good work. Thank you.

Refill too provides care and encouragement to the mums and children who attend on a Friday morning. It is a group that offers support to one another, and a place for the children to play and mums to chat; it is very much appreciated.

Colin Chilvers, as one of the leaders of the Pantry Foodbank, keeps a pastoral eye on some of the recipients of foodbank parcels. The team make him aware of any pastoral needs they hear about or observe.

What a privilege to serve God with compassion and love for those in the community, as well as within the church. May this work continue to flourish in the coming year.

Mary Ives & Rev Rosie Bunn



The Church Pantry Foodbank

Supporting Families in Need in Belton,
Browston and Burgh Castle

The Pantry foodbank has run smoothly again for the last year but the numbers of families needing support have steadily reduced from 19 down to 15 with only 3 families now on *foodbank support* and the rest on *community food*. (An answer to prayer....) In the last year we have given out 1295 bags of groceries.

Physical donations have dropped during the last year but we are still receiving cash donations on a regular basis from :

- Belton Keep fit group
- JGI raffles at coffee mornings
- Belton Craft Club
- One lady from Young at Heart

- And other supporters giving through the offertory basket or bank transfer.

We've also received food donations from :

- Bradwell Butcher's (bread) and other items at Christmas & Easter
- Tony Colk (home-grown fruit and veg)
- Moorlands school (from the parents & children)
- 6 large boxes from Perenco(an offshore company)
- Donations from both parishes, at Harvest and leading up to Christmas.

We gave every family a gift at Christmas kindly donated by the parishioners. All (seven) of the team work well together to make the Pantry foodbank run smoothly. We have recently completed our safeguarding training, too.

Thank you to all for showing such generous support for this vital community need. Please pray for The Pantry Households to continue gaining independence & to know how much their Father in Heaven has cared for them through The Church Pantry.

Colin & Marion, Bob & Linda
& The Belton Church Pantry Foodbank Team

Young @Heart Report.

Weekly attendance has remained around 21 members.

Our six volunteers concentrate on providing coffee (tea) cake and conversation within a welcoming atmosphere. All are welcomed.

A monthly traditional church service and, separately, a quiz are provided. Weekly donations of £1 are our mainstay of funding.

We were delighted to receive a charitable donation of £2000 from Guardline in Great Yarmouth and have so far used it to join Centre 81 to provide transport for our less able members. Our Christmas lunch was the first time we used the service.

In February we received defibrillator training from East Anglia Air Ambulance. Y@H reciprocated with a £50 donation.

In May we served a fish & chip lunch and in June we went on a coach trip to Wroxham finishing with an afternoon tea.

A summer show trip was organised in September along with a visit to Cherry Lane for coffee.

In December we gathered for a Christmas lunch followed the next week by carols and mince pies.

A special mention is necessary for our volunteers without whom none of the above would be possible.

And to our Father, God. Somehow the above happens by subsidising events and paying the heating from weekly £1 donations.

As well as coffee, cake and conversation, a lot of laughter is heard each week!

Sue Angell

ReFill?

Group for parents/carers and their children 0-5s

The ReFill parent-toddler group continues to grow, with more parents attending each week. We now regularly welcome six to seven mothers with their children, creating a warm and friendly environment. Some parents also bring friends after school drop-off, further expanding our community.

Following a mum's suggestion, we now offer toast during sessions. This small addition has been well received, making the meet-up even more enjoyable. We are making the most of the church space, providing a welcoming environment while introducing more people to the building and making it a familiar community space.

Toddler groups help children develop social skills, share, communicate, and play cooperatively. The informal setting supports early learning and prepares them for preschool.

For parents, the group offers a valuable support system, connecting them with others on a similar journey. It helps combat isolation and provides a relaxed space to enjoy social interaction while children play safely.

Volunteers play a crucial role in keeping the group running smoothly, and we would love additional help. Whether it's making tea and coffee, offering a listening ear to parents, or assisting with setting up and putting away toys, every contribution is greatly appreciated. Volunteering is a wonderful way to give back to the community and support families in a meaningful way.

The ongoing success of ReFill highlights its importance. As more parents join and share ideas, we continue to evolve, ensuring the group remains a welcoming space for all.

Liz Stone

Children and Youth

Rock Solid

Rock Solid continues to be enjoyed by the children who attend; numbers are less than in some years, partly I suspect, because of additional after school

clubs run by Moorlands and Beavers starts on a Thursday evening when Rock Solid is in full-swing.

During the summer, we enjoyed playing games all together on the main lawn on a few occasions, and a very fiercely contested water fight at the “Beach Party” at the end of the school year.

It always amazes me just how much the children enjoy being outside, playing on the trampoline, at the basketball ring, on the various toys and games, as well as football. It’s a job to get some of them to stay indoors, even when it’s cold or wet.

We have enjoyed many craft activities, including making a Christmas gift for each of the residents of Burgh House in Burgh Castle, and making cakes or icing biscuits.

An important part of our time together is just that, *our time together*, when the children talk about what they’ve done and things they are looking forward to doing, as well as conversations that arise from what might be the theme of the day, about a biblical character or a godly-characteristic or quality.

What the future holds for this group is not currently known. Tim and myself are very much involved in the leadership of this group and those who assist are unable to take the lead. Also, it is unclear whether continued use of the building will be possible. At a minimum, two new leaders are required to keep this group going. It may be possible to change the day the group meets, if the Stables are able to be used.

Rev Rosie Bunn

Sunday Morning Children’s Group

The children continue to enjoy their time together on a Sunday morning under the leadership of Kelly Bancroft and/or Antonia Symeou with support from Adam Stone, who have provided a time of learning which is fun and effective. This must be challenging at times with the age range of the children from 3-13 years.

Roots provides the ideas and content for much of the Children’s programme, and usually parents and children are covering the same Bible passages and themes.

Our children are an integral part of our church family, so I am extremely grateful to all who invest their time in preparation and leading the children’s work on a Sunday morning, and for all who help.

Moorlands Church of England Primary Academy

The church continues to enjoy being involved with Moorlands Primary Academy, part of the Ark Federation, in the Diocese of Norwich Education Academy Trust



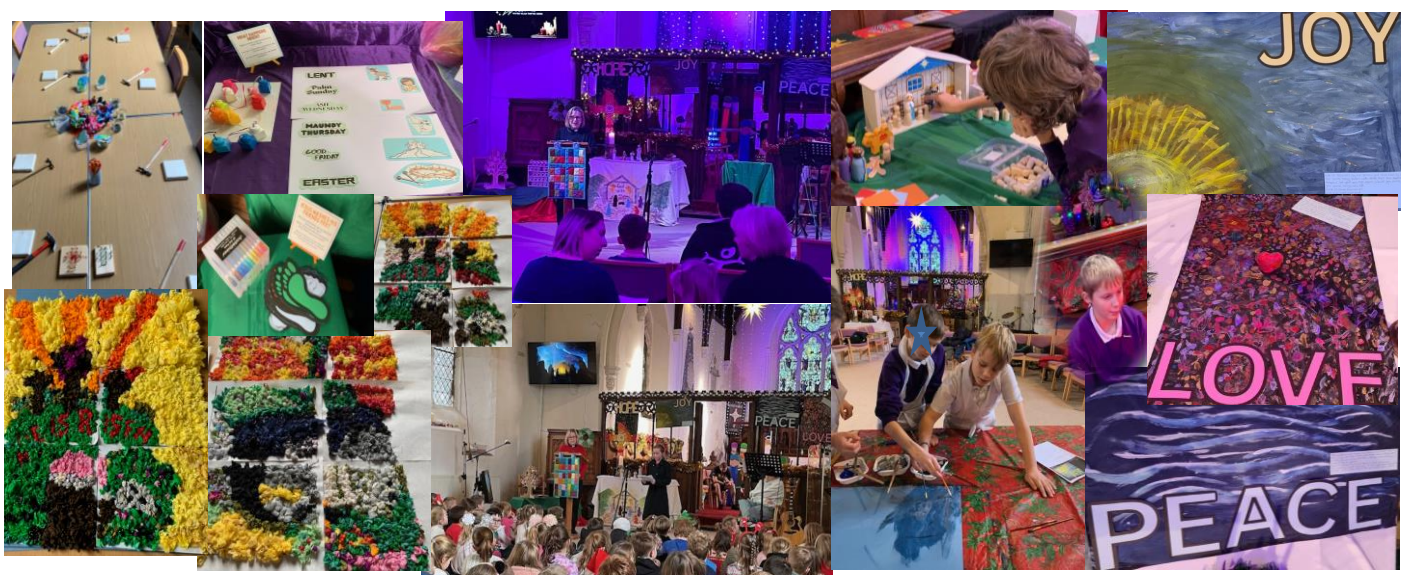
(DNEAT). The Symbiotic relationship developed over the years with the school community continues to bless all involved.

Anneka and Rosie provide collective worship once a week, allowing them to explore key Christian beliefs and their application to today's world. Themes for 2024 included:

- Integrity
- Perseverance
- Compassion
- Courage
- Resilience
- Hope

The children also focus on the vision & values of Moorlands. They celebrate the festivals of the church calendar in the Church building with the interesting exercise of fitting everyone in as the children get bigger as the school year progresses. Again this year we hosted a school Christmas Carol Service.

The enjoyment the children (and volunteers) have found in the Easter, Thy Kingdom Come and Christmas workshops, where each class comes to the church to enjoy and experience activities and a prayer space on the seasonal theme, has been a gratifying highlight of working with the school.



The year six students were once again presented with a Youth Bible at the end of their time at Moorlands, as they prepare to move on to High School. We know that it is a significant investment for us as a church as we pray and trust God that the seeds sown will bear fruit in due course.

Rev Rosie Bunn & Anneka Gearie



Messy Muddy Church

We continue to meet in The Rectory Garden on the third Sunday of the month from 4-5.30pm. We are never quite sure how many families will turn up; sometimes we have wondered if we have

enough food, on other occasions we have had a feast to share.

Food (and warm drinks on occasion) has been central to our time together: hot dogs, beef burgers and always toasted marshmallows.

We have had such fun outside engaging with creation and worshipping God together; in beautiful sunshine and on dark evenings; covering such themes as creation, harvest, love and hope through activities, exploring the garden, making dens, craft – planting bulbs, creating autumn wreaths, Advent/Jesse trees and salad spinner painting, cooking, with stories, talking and prayer. Watching the colourful flames in the fire pit is always a highlight.



We are praying that this ministry will continue to flourish in the coming year.

Rev Rosie Bunn

YOUTH

The youth group, run with East Norfolk Youth for Christ, started in September 2024. East Norfolk funds my time as Youth Worker, while the Church covers food and resources. Any financial support, whether for running costs or specific needs, is greatly appreciated. I oversee volunteers and ensure the group is a safe, welcoming space for young people to relax, connect, and grow.

We have around ten regulars in years 6-7, but we're open to years 6-9 and may expand. With more involvement in Lynn Grove School (as part of my work for ENYFC), we hope to see even more young people join. Soon, we'll introduce a faith talk to encourage discussions about life and values.

The group fosters belonging, friendships, and new skills. Activities include a football table, pool, Xbox, PS4, Wii, board games, art, group games, doodling, nail painting, and plenty of space to chill. Plus, our toast with toppings, hot chocolate, and milkshakes are always a hit!

Feedback from parents has been positive—one described it as "a giant living room where they can hang out." That's exactly the vibe we're aiming for! Volunteers are essential, and we urgently need more. They help the group run smoothly and provide young people with positive role models. More volunteers mean a better experience for everyone.

The group doesn't have an official name yet—maybe it'll just stay 'Youth Group'—but whatever it's called, we're excited to keep growing and supporting more young people.

Liz Stone

Ecochurch

As a church we continue to be as environmentally friendly as possible, with recycling, the judicious use of energy for heating and lighting etc.

worship and teaching

We continue to hold special services relating to caring for God's earth whenever appropriate using songs and liturgies to enable us to celebrate God's creation.

building

The electricity supplied to our premises has been switched to a tariff that is partially covered by renewable energy and the lighting in the nave and chancel has been switched to LED bulbs.

We have switched to using refillable toiletries and liquids whenever possible and all disposals (cups, cutlery etc) when needed are compostable or recyclable.

Recycling facilities are available both inside and outside our building, but we continue to have issues with people putting the wrong items in the bins.

land

We continue to manage our land to encourage native wildlife and have secured native trees and be planted along our borders.

community and global engagement

The men's walk ministry and messy/muddy church continues to encourage everyone to get out and enjoy God's earth in our local areas.

Whenever possible fair-trade and ethically sourced goods are used at services and events, and we continue to encourage the reduction of food waste by minimising leftovers and sharing of excess to all members and groups.

lifestyle

Walking to church and events is highly encourages to enable the limited parking to be used by those who need it most.

After previous success we continue to encourage the use of communal card schemes rather than distributing individual cards at Christmas and Easter.

If you would like to help further our work towards our silver eco church award then please speak to Anneka about joining the team.

Anneka Gearie

Prayer, Bible Study and Life Group Reports

Men's Prayer Breakfast (Tuesday) and Engine Room (Saturday)

Tuesday prayer has taken place most weeks at 7:00 a.m. in the conservatory at Derek's house. There have been two of us in regular attendance. We begin by reading the daily prayer written by Derek and then follow this with free prayer, although it has been interesting to see how the free prayer has built so

much on the written. We pray regularly for the leadership team, PCC, Young at Heart, the Pantry, Refill, Recharge and Youth as well as any individuals or other situations that come to mind. More recently we have prayed about the upcoming retirement and the interregnum.

Engine Room is also a men's prayer group on Saturday, again at Derek's house but starting at 8:30 a.m. again with two in regular attendance. The format is similar to Tuesday but does have an emphasis on praying for the future of the church and its plans.

There have also been a number of walks throughout the year as part of this, leaving the Rectory after a bacon roll and ending with a pint at a pub.

Derek Mill

Monday night Bible Study

This closed down earlier in the year as those who had been attending had other commitments.

Derek Mill

Recharge

Recharge is a welcoming home group that actively promotes itself to non-Christians and those outside the church, providing a space for individuals in their 20s, 30s, and 40s to connect, share experiences, and support one another. Run by Christians, it fosters friendships and open discussions in a judgment-free space. The group values acceptance, hospitality, and community, encouraging meaningful connections and personal growth.

Recharge provides a platform to discuss key life topics, including balancing careers and relationships, exploring spirituality and personal beliefs, coping with loss and health challenges, and navigating the joys and struggles of raising children. More than a discussion group, Recharge is a place to form lasting friendships through regular meetups, shared meals, and activities. It offers a space for support, friendship, and open conversation, embodying Christian values of love, kindness, and hospitality. Everyone is welcome to share and be heard.

We have also enjoy regular social nights, whether that be an evening out in Yarmouth or a relaxed board game night, providing opportunities for members to unwind, have fun, and build connections. One of the highlights of the year was our Christmas party, where we enjoyed a festive time together with Secret Santa presents, fun games, and delicious food. It was a wonderful opportunity to celebrate the season, strengthen friendships, and create cherished memories.

Liz, Adam, Kelly and Toni

Paddock Close Life Group

Up to eleven of us meet most weeks of the year to study the Bible together and pray for each other as things arise in our lives. It has been good to see how God is working in our lives. The main aim of the group is that each of us grow in our understanding of God's Word and what it means to each of us personally, no matter what our starting point. Some have been Christians for many years, others are much younger in their faith. To this end we have studied among other things, Paul's first letter to Timothy; we took our part in the 'Thy Kingdom Come' week with the whole Church; and looked at ways we can praise God even in our more difficult times.

We have considered some of the names and characteristics of God, and more recently, what the Bible says He thinks of us. This has been an eye-opener, as often the value He puts on us is in direct contrast to what we believe to be true. Our biggest challenge? If God says we are truly forgiven, but we don't feel it, which version do we choose to believe? If God says we can approach Him with confidence, but we don't feel confident, what do we do? This has been very interesting!

A Life Group is a great place to tussle with the difficulties and struggles we may have, in a safe and supportive environment. I would strongly recommend joining one if you aren't in one already!

Jane Mill

The Rectory Life Group

We remain a small group who enjoy one another's company and supporting each other. We meet together either at the Rectory or Belton Lodge. If anyone feels they would benefit from joining us, please have a word with myself or Tim or any of our group – Jim & Barbie, An Howell, Derek Mill, Chris Straton, Regi & Reena.

During Lent, we studied "He chose the Nails" a book and course written by Max Lucado, and at Christmas we looked briefly at "Because of Bethlehem" by the same author. In between, we have spent time studying Paul and some of his journeys around the Mediterranean, in particular talking about places that Tim and I visited on our holiday in October, and reading the letters to the churches in Revelation.

We always enjoy eating together and usually do that at the end of the summer and at Christmas, as a minimum. This year we enjoyed a full Christmas dinner, and lots of laughter and chat, and a *Secret Santa*. What fun!

Derek Mill will take the leadership of this group in 2025, although everyone is always willing to lend a hand and join in.

Rev Rosie Bunn

Curate to PTO and beyond Report

The year 2024 has been a significant year for me. I continued in part-time ministry leading worship, pastoral care and occasional offices at both Belton and Burgh Castle, Easter and Christmas, busy with school workshops and extra services.

Last April brought me to the end of my curacy period in the church and I found myself being seamlessly transported to the post or identity of PTO. This means I have Permission to Officiate church services, weddings, funerals, baptisms, as well as pastoral work in this diocese.

However, this year I made the decision that it is time for me to move to be nearer to family – this means a lot of packing up physically, mentally and emotionally (40 years of life in Norfolk raising a family, my career in education, through to ordination and ministry) yet looking forward to new opportunities, responsibilities and experiences.

Living here and working for the church in Belton has been delightful and fulfilling, challenging and rewarding. As I continue to serve, I am grateful for the experiences and opportunities that have shaped my path.

This journey would not have been possible without the unwavering love, prayers and support of Rev Rosie, my Life Group and the whole church community and of course the guiding hand of God who has led me through and will continue to do so as I transition into a new phase of my life. Thank you all. Thanks be to God.

Rev Viv Ridpath

Rector's Report

I wonder what stands out in your memories for 2024; in particular what was important in your walk with the Lord during last year?

For me, one of the highlights of 2024 was a pilgrimage "In the Wake of St Paul", when Tim and I travelled to some of the sites in Greece and Turkey where Paul ministered, seeing for ourselves the context of some of the significant experiences of his life. I am grateful to have shared that with Tim and for the ministry we have shared together, too.

On Sunday 30th June, we welcomed Mary and Robin Ives back into our fellowship with a joint service with St Peter & St Paul Church, Burgh Castle, Mary receiving her licence from Andrew Cossey the Warden of Licensed Lay Ministers. For me, this was a significant day – welcoming Mary and having both churches join together in worship, followed by a bring and share lunch.

In another way, a significant day was Sunday 3rd November when I announced that I was retiring at Easter 2025. It came as a shock to some of you, but as I have served this parish for 14 years, may be not to some. When I look at the list of Rectors of Belton Church, where the first name is Rev Richard De Pulham in 1344, I feel very humbled to see mine at number thirty two, and the starting year of 2011. The end of 2024 was spent beginning preparations for handing over the baton to the next person called to lead All Saints and the church in Burgh Castle.

As All Saints Church, Belton, is a church that seeks to love God, love people and love life, I have complete faith in Jesus, that he will continue to lead his church, as he has done through me. My prayer is that working as the body of Christ, with all members honoured and valued, people will look at the church and see love in action.

1 Corinthians 12 teaches us that just as a body, though one, has many parts God has placed the parts in the body, every one of them, just as he wanted them to be..... and God has put the body together..... so that there should be no division in the body, but that its parts should have equal concern for each other. If one part suffers, every part suffers with it; if one part is honoured, every part rejoices with it.

Paul goes on in his letter to the Corinthian church to tell them that the most excellent way of being the body of Christ together is shown through love; Love is patient, kind, protective, hopeful, trusting. It is not envious, proud, self-seeking, easily angered, or boastful. It doesn't dishonour others, or keep a record of wrongs. Love always perseveres. We are also told elsewhere in scripture that *love covers over a multitude of sins* (1 Peter 4:8).

With God's help, you will be able to love like that; and you will need to.

All Saints, Belton is a church blessed with many members who contribute in different ways to the richness and diversity of church family life together; using gifts and skills given in service to God and one another. I am thankful for all of you!

- When we come together on a Sunday there are many people contributing to our worship: in counting up I reckon there are around 25-26 tasks/roles covered, and about 17 people involved
- Worship leaders: musicians and vocalists, the PA and AV operators, our intercessors and readers, those who look after the church linen and consumables for Communion, our service leaders, preachers and teachers. Thank you so much for all you have given to the worshipping community of All Saints – you are really appreciated and valued.
- A big *thank you* to those who help to provide/serve our refreshments each Sunday. I am certainly very grateful for my hot cup of coffee when I come in from taking a service at Burgh Castle.
- I don't want to overlook the hard work of any of you, especially our children's leaders: Sunday morning children's group, Refill!, those who help at Messy Muddy Church, Rock Solid and our recent start-up – the Youth group;
- A huge *thank you*, too, to Michelle Horgan, our Parish Safeguarding Officer. We are grateful for your oversight of our DBS and training needs, and your input that enables the church to make safeguarding a natural part of our life together where we all take responsibility for making our church a safe place for all.
- PCC members, thank you for taking seriously your commitment to dealing with the business of the church, tackling the challenges we face, and pulling together through difficult times. A big thank you to those who have served well but will not be standing for PCC in 2025 for personal reasons.
- Leadership Team, thank you for your commitment in the past year; to Colin Chilvers and Rev Viv Ridpath who have stepped down and to Mary Ives, Kelly Bancroft and Adam Stone who have stepped up. In you, the church is blessed with leaders who are called to serve humbly, wisely and prayerfully, using their God-given gifts. Pray for them. They will really value your prayers during the interregnum.
- Anneka Gearie, thank you for all you do, often unseen, to enable the church to function and flourish; for all you do as Churchwarden and Treasurer; for your ability to work alongside me in the work with Moorlands Academy, particularly in Collective Worship and the workshops for Easter, Thy Kingdom Come and Christmas.
- A huge thank you to those who pray regularly and faithfully for the church, the world, our community and individuals and to those who minister in prayer to individuals. Thank you! Prayer is so important. It is vital, life-giving and without it we cannot achieve anything of value in the kingdom of God. Prayer Together the monthly prayer meeting will need to be the engine room and powerhouse of church life.

- Pastoral carers; those who visit parishioners, continuing the care of the elderly, sick and bereaved; thank you for finding creative ways to continue this vital care. You supported the *Service of Remembrance and Thanksgiving for the Departed* that took place in June at Burgh Castle, and it will once again return to Belton in June 2025. So much of your work goes unseen by humans but is very much seen and on the heart of God. Mary Ives has agreed to oversee pastoral care in the benefice for the future.
- The Pantry Foodbank Team, who care for people in need on behalf of the church, do their work behind the scenes, quietly and confidentially; reflecting the care and attention that Jesus gave to the poor and needy. Thank you.
- There is always much to do in caring for the church building and churchyard; in general maintenance, moving chairs/tables, cleaning and tidying, decorating with flowers, looking after the notice boards, etc. Thank you!
- This past year has seen an incredible transformation in the churchyard, thanks to the local *Pay Back* Team. I am grateful to Bob Hudson for continuing to enable this to happen, opening the church annexe early on a Saturday morning when they arrive. On behalf of the church, I have thanked the team members at Easter and Christmas, with Easter eggs and chocolate selection boxes, and provided them with the occasional hot sausage roll or bacon butty.
- Those of you who belong to a Life Group will know how important Life groups are; they play an important part in enabling us to care for one another as disciples of Jesus. We currently have four such groups meeting as:
 - *Recharge* on Mondays, led by Adam & Liz Stone
 - *Paddock Close Lifegroup* on Tuesdays, led by Jane Mill and team
 - *Woodlands Lifegroup* on Thursday afternoons, led by Mary Ives
 - *The Rectory Lifegroup* on Thursday evenings, led by myself
 Leaders, you make such a difference to many people.
- Sharing the gospel happens through various mediums: social media, the website, in the *Village Voice*, and face to face; thank you to all who share the gospel in our village, and to all who raise funds for the church or charity.

We have had much to celebrate as a church in 2024 and as we contemplate where God is leading his church in 2025, may our prayer be:

For all that has been, Thank you!

For all that is to come, Yes!"

Visitors who come into our church building, or see the church in action, are usually much impressed with our facilities, our welcome, and who we are (or who we seek to be) – kingdom people; followers of Jesus. Sometimes we take all this for granted, but I hope we don't take one another for granted!

God is a faithful God who has provided for us in many ways. However, we still struggle financially. We have again failed to pay our parish share in full, despite seeking to cut back where we can. I know that the current financial challenges of

the church are reflected in our own personal financial challenges of rising prices and housing costs. Do we give seriously and in a way that honours God, or does he just get what is left over when we have had or done what we want? I always find these scriptures helpful in thinking about giving ...

Give, and it will be given to you. A good measure, pressed down, shaken together and running over, will be poured into your lap. For with the measure you use, it will be measured to you. Luke 6:38

Bring the whole tithe into the storehouse, that there may be food in my house. Test me in this," says the LORD Almighty, "and see if I will not throw open the floodgates of heaven and pour out so much blessing that there will not be room enough to store it. Malachi 3:10

Honour the LORD with your wealth, with the first fruits of all your crops; then your barns will be filled to overflowing, and your vats will brim over with new wine. Proverbs 3: 9-10

"Do not store up for yourselves treasures on earth, where moths and vermin destroy, and where thieves break in and steal. But store up for yourselves treasures in heaven, where moths and vermin do not destroy, and where thieves do not break in and steal. For where your treasure is, there your heart will be also. Matthew 6: 19-21

Please do remember that our church only receives income from our offerings and tithes, and God loves a cheerful giver.

Finally, I want to remind you of the description of the early church, found in Acts 2: 42-47, which shows what is possible with a depth of relationship between Christ's followers and Christ himself.

They devoted themselves to the apostles' teaching and to fellowship, to the breaking of bread and to prayer. Everyone was filled with awe at the many wonders and signs performed by the apostles. All the believers were together and had everything in common. They sold property and possessions to give to anyone who had need. Every day they continued to meet together in the temple courts. They broke bread in their homes and ate together with glad and sincere hearts, praising God and enjoying the favour of all the people. And the Lord added to their number daily those who were being saved.

The principles of devotion, awe, commitment, fellowship and prayer contributed to the quality of their life together. May God bless you in 2025 and onwards, and may your prayers be answered and bring glory to God. Let your kingdom come, Lord!

Rev Rosie Bunn

Promoting a safer church

The care and protection of children, young people and adults involved in Church activities is the responsibility of everyone who participates in the life of the Church

House of Bishops
Safeguarding Policy
for children, young
people & adults

IF YOU ARE CONCERNED

that someone you know is at risk of, or is being abused, or presents a risk to others, please seek advice from a Safeguarding Adviser or if necessary report the matter to the Local Authority Social Care Services or the Police without delay.

Local contacts available to speak to if you have any concerns:

Name: Michelle Horgan
Role: Parish Safeguarding Officer
Tel: 01493 789048
E-mail: michelle.horgan012@gmail.com

Name: _____
Role: _____
Tel: _____
E-mail: _____

Name: Sue Brice
Role: Diocesan Safeguarding Adviser
Tel: 07958377079
E-mail: safeguarding@dioceseofnorwich.org

Local Authority Social Services:

**IF THERE IS IMMEDIATE RISK OR DANGER
PLEASE CONTACT THE POLICE ON 999.**

OUR COMMITMENTS

- Promoting a safer environment and culture
- Safely recruiting and supporting all those with any responsibility related to children and vulnerable adults
- Responding promptly to every safeguarding concern or allegation
- Caring pastorally for victims/survivors of abuse or other affected persons
- Caring pastorally for those who are the subject of concerns/allegations of abuse and other affected persons
- Responding to those that may pose a present risk.

HELPLINES

- NSPCC: 0800 800 5000
- Childline: 0800 1111
- Stop It Now: 0800 1000 900
- NAPAC: 0800 801 0331
- Samaritans: 116 123
- Family Lives: 0800 800 2222
- National Domestic Violence Helpline: 0800 2000 247
- Action On Elder Abuse: 0800 8808 8141

 THE CHURCH
OF ENGLAND
www.churchofengland.org/safeguarding